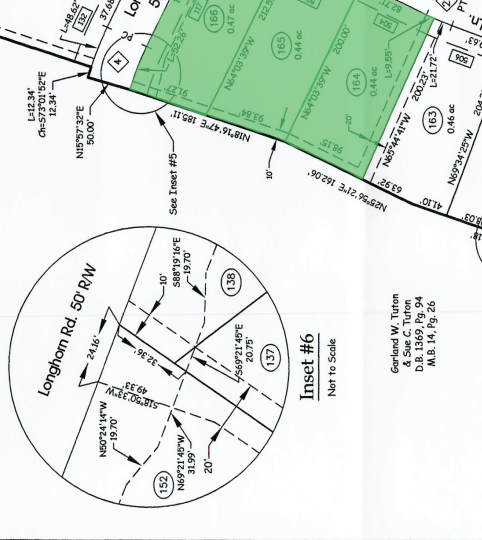
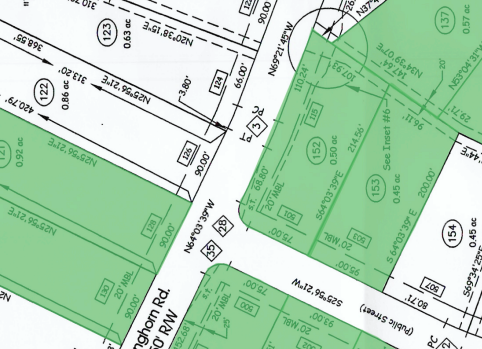
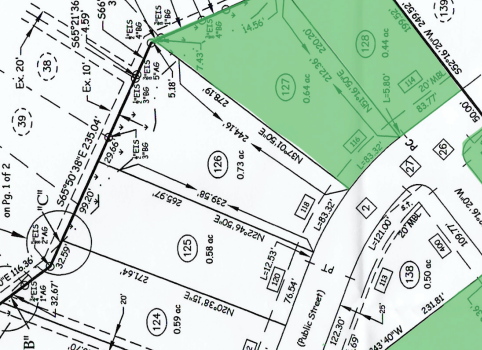
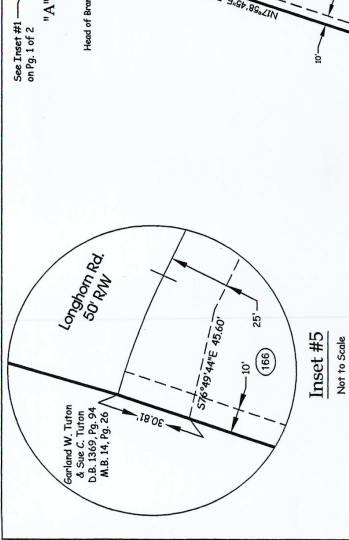
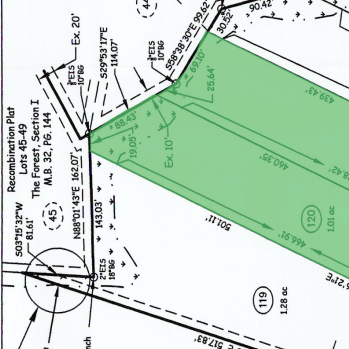
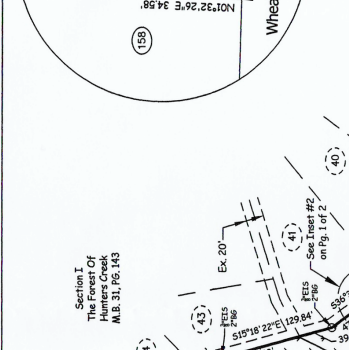
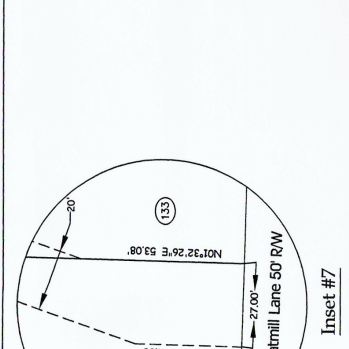


- Legend:**
- Ac. - Acres
  - AG - Above Ground
  - BG - Below Ground
  - Ch - Chord
  - D.B. - Dead Book
  - ES - Existing Iron Stake
  - GC - Gas Cap
  - LC - Loc. Cont.
  - M.B. - Map Book
  - M.B.L. - Minimum Building Line
  - N.C.S.R. - North Carolina Secondary Road
  - PC - Point of Curvature
  - Pg. - Page
  - PT - Point of Tangency
  - R.V. - Radius
  - SL - 10' X 20' Slight Triangle
  - xxxx - Address
  - 26 - Curve Number
  - - Easement Line
  - 34 - Existing Lot Number
  - 128 - Lot Number
  - Wetlands Hatched
  - Wetlands Line

404 Wetlands Contour  
 Proprietary buyers are cautioned that portions of the lots shown on this plat are restricted in use by the jurisdiction of the United States Department of the Interior, Bureau of Land Management. Verification of location and restrictions should be made prior to investment in development.



45 Lots  
27.13 Acres  
P.O. Box 0066  
Jacksonville, North Carolina 28541  
(910) 577-1441

**FINAL PLAT**

**THE FARM AT HUNTERS CREEK,  
SECTION IV-A**

White Oak Twp., Onslow Co., North Carolina

**The Landing Development Corporation**

DATE: 10/15/19  
SCALE: No Scale

GRAPHIC SCALE: 1" = 100'  
0 50 100 200 300 FEET

**PARKER & ASSOCIATES, INC.**  
 Engineers - Surveyors - Planners  
 Jacksonville, North Carolina  
 P.O. Box 976 - 306 New Bridge Street - 28540  
 Phone (910) 455-2414 - www.ParkerAssociates.com  
 N.C. Firm License Number: F-0108

Recombination Plat  
Lots 45-49  
The Forest, Section I  
M.B. 32, Pg. 144  
See Inset #5  
on Pg. 1 of 2

Head of Branch  
See Inset #1  
on Pg. 1 of 2

See Inset #2  
on Pg. 1 of 2

See Inset #3  
on Pg. 1 of 2

See Inset #4  
on Pg. 1 of 2

See Inset #5  
on Pg. 1 of 2

See Inset #6  
on Pg. 1 of 2

See Inset #7  
on Pg. 1 of 2

See Inset #8  
on Pg. 1 of 2

See Inset #9  
on Pg. 1 of 2

See Inset #10  
on Pg. 1 of 2

See Inset #11  
on Pg. 1 of 2

Garland W. Tutton  
& Sae C. Tutton  
D.B. 1305 Pg. 94  
M.B. 14, Pg. 26

Lewis Mccoy Humphrey  
& Sons, Inc.  
D.B. 4354 Pg. 77  
M.B. 14, Pg. 26

Field Book: N/A  
Disk Name: ACAD 1045  
Filename: Form IV A.PDF.dwg  
Job No.: 580023-0923

Wheatmill Lane 50' R/W  
Public Street  
Per M.B. 74, Pg. 22

Ex. Wheatmill Lane  
50' R/W  
Public Street  
Per M.B. 74, Pg. 22

Collier Ranch Ln  
50' R/W  
Public Street

Roanoke Ln  
50' R/W  
Public Street

Wetlands Line (Typ.)

Wetlands Hatched

Wetlands Line

Wetlands Contour

Wetlands